



# Farmers and Farming



An introduction to farming Sheep, Pigs  
and Cattle in Wales for KS2



# This is a Farm

Have you seen some farms like this dotted around when you go out and about in the car?

Do you live on a farm or have you ever visited a farm?







# Farms = Farmers

Farms are where farmers and their families live and work.

There are 200,000 farms across the UK.

There are 37,000 farms in Wales.

Here is the Jones family, they farm in Mid Wales.





# A Year Round Job

Farmers farm all the year around – in all weathers!







# Types of farms

Not all farms are the same. Some farms...

- grow crops such as wheat – these are called arable farms
- have cows that are milked – these are called dairy farms
- have sheep, cows and pigs which are reared for their meat – these are called pastoral farms
- are a mixture of the above and are called mixed farming





# What do farmers do?

Farms and farmers produce food for you, me and our families.

Think about the food you like to eat?

How many of them started life on a farm?







# Farming Animals in Wales





# Sheep

Wales is a country full of mountains and hills.

We have lot's of grass because we get a lot of rain – this is perfect for rearing sheep, lot of sheep!

- 11 Million sheep live in Wales
- 3 Million people live in Wales







# Beef Cattle

Beef cows are looked after by the farmer to produce beef.

They have plenty of room to live outdoors in the fields and then in winter the farmer brings them into sheds and sometimes feeds them hay and sileage.





# Pigs

Pigs reared in Wales are generally kept in smaller herds, creating a happier environment for the animals.

There is even a native Welsh Pedigree of Pig.







# Different Animals = Different Meat



**Cattle**



**Beef**



**Sheep**



**Lamb**



**Pigs**



**Pork**



# Where to buy lamb, beef and pork?

**Butchers Shop**



**Supermarket**



**Farmers Market**





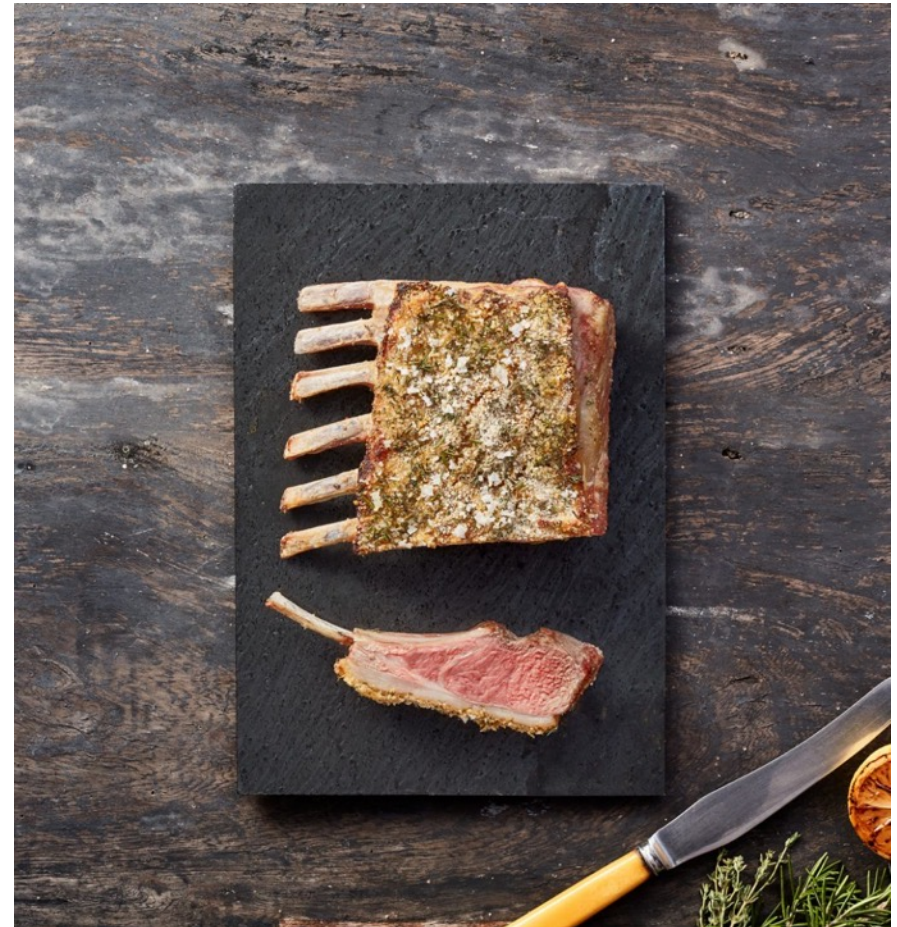


# Different cuts of meat

The meat comes in different cuts which can be cooked in a lot of different ways.

Some cuts are best cooked fast while others are nicer when they are cooked slowly.

Mince is good for making burgers whilst a lamb leg for a Sunday roast. This is called a rack of lamb





# Delicious Dishes

Welsh Beef , Lamb and pork are delicious meats and can be used in a lot of different dishes.

What's your favourite recipe?

Why not ask members of your family what their favourite lamb, beef or pork dishes are?







# In Summary

- The animals are reared on farms
- The animals are well cared for
- The meat comes from the animals
- We use the meat to create delicious meals

